

# 4SAFE

## Safety for swing and revolving doors



### Increased safety



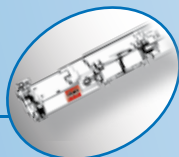
- One card for wide safety field (4 beams in row = 400mm\*)
- Low dead zone (typ. 15cm\*)

### Intuitive & quick installation



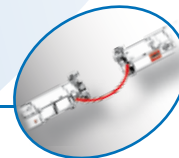
- Sensor configuration in one push (Plug – Push – Go)
- DIP-switch for adjustments in specific cases
- Only one cable to the door controller to secure both sides of a swing door (no other accessories required)

### Safe & cost-effective



- Long term stability thanks to temperature compensation and optimised IR-LED-activation (no overheating!)
- Low power consumption

### Modular design



- Extendible safety field through easy connection of additional cards
- Each card can be used as a MASTER or add-on card (SLAVE) with automatic function recognition
- Modular design (separate components are available)

### Universal



- Adapts itself to all environments
- Mounting height up to 3.5m
- Monitoring according to EN13849-1/EN954-1

\*2m mounting height

## Applications



Swing door



Revolving door

## Technical specifications

### Technology

Technology:	active infrared with background analysis and background suppression distance measurement via triangulation presence detection; moving
Detection mode:	4
Number of beams:	20% at IR-wavelength of 850nm
Min. reflectivity background/object:	1.1 to 3.5m
Mounting height:	presetting: 2m
Field size (at 2m mounting height):	400mm x 70mm
Number of cards in one chain:	max. 6 (at 24V supply voltage)
Max. presence detection time:	infinite (SWING-configuration) 1 minute (REVOLVING-configuration)

### Electrical specifications

Supply voltage:	12V - 30V DC; 12V - 27V AC - 50/60Hz
Power consumption:	<2WVA for each card
Outputs:	2 independent relay-outputs (max. 42V; max. 1A resistive)
Inputs:	1 free of potential test-input (max. 30V) (only «ON»-version)
Response time at detection:	< 70ms; max. 128ms
Response time at monitoring:	< 5ms

### Mechanical specifications

Material:	ABS; aluminium; polycarbonate (PC) profile colour: anodised ALU/ black front face colour: black
Dimensions:	sensor-card: 300mm profile: L* x 43.5mm (H) x 47.5mm (D) *L: length of profile according to packaging (see Options)

### Environmental conditions

Degree of protection:	IP53
Temperature range:	-25°C to +55°C
Humidity:	0-95%, non condensing

### Standards/Certification

Conformity:	EN13849-1: Performance Level «c» (vgl. EN954-1 CAT.2) EN61508: SIL. 2 EN61000-6-1 / -6-2 / -6-3 / -6-4 DIN 18650 EN12978
-------------	---

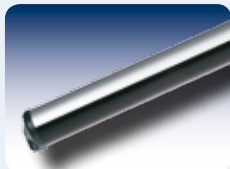
Subject to changes without prior notice

## Product range

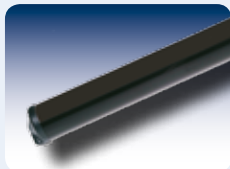
- **4SAFE ON SW:** Configuration for swing doors with monitoring
- **4SAFE OFF SW:** Configuration for swing doors without monitoring
- **4SAFE ON REV:** Configuration for revolving doors with monitoring
- **4SAFE OFF REV:** Configuration for revolving doors without monitoring
- **KITS** in various versions



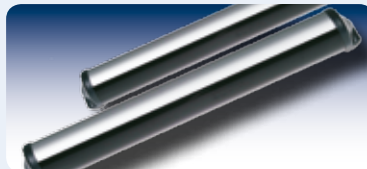
## Options and accessories



Profile in anodised ALU



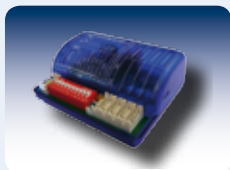
Profile in black



Standard lengths of profiles:  
340mm, 700mm, 900mm, 1100mm,  
1200mm, 1400mm, 1500mm, 2600mm



Spotfinder



Multi-Sensor Hub



Retrofit-Interface