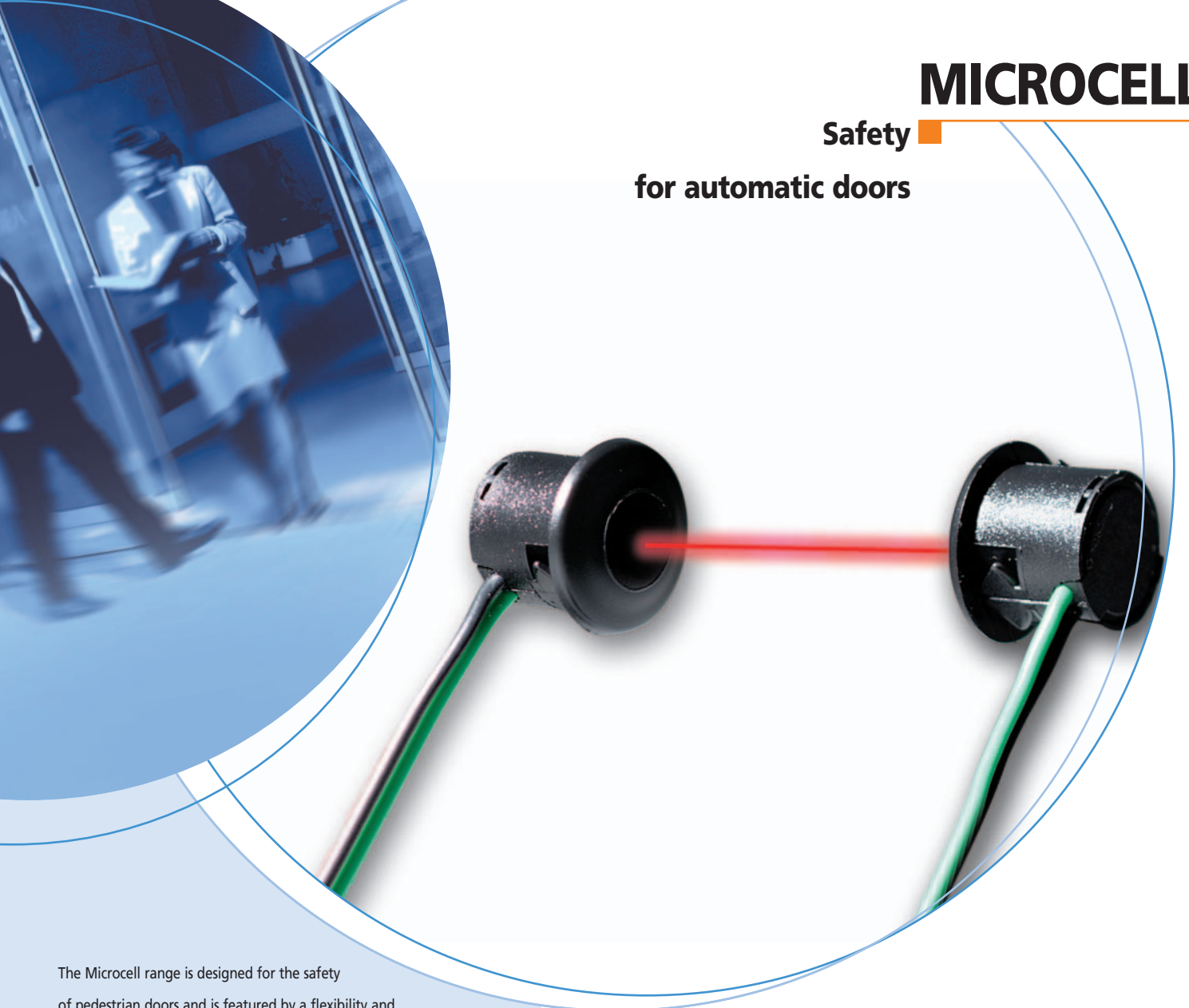


# MICROCELL

Safety

for automatic doors



The Microcell range is designed for the safety of pedestrian doors and is featured by a flexibility and an easiness for universal installations :

- reduced size for easy fittings in most of door profiles
- enables a mounting very close to the floor (20 cm - 40 cm), as well as an important range (5 m - 10 m) and can be lightly out of alignment
- protected against short time wrong connections and immuned to the ambient light (sunlight or artificial lighting)
- totally immune to interference and complies with the European standards 89/336/EEC
- Microcell Two complies with ESC standards, and with the French Ministerial Order on automatic doors in the workplace
- Microcell Three complies with the German directive ZH 1/494 on windows and doors activated by external energy sources
- plug supplied with a special sleeve that prevents from moisture problems

## ■ Infrared barrier composed by an emitter and a receiver in cylindrical

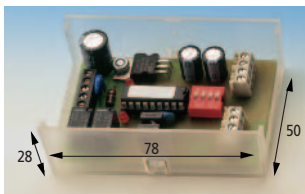
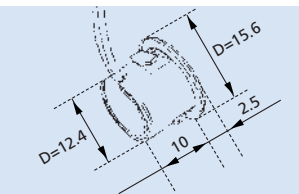
The small-sized infrared beams that can be discreetly fitted into the profiles of single or double doors and which can also be used for specific applications (railways, security entrances, etc.).

■ The Microcell range is available in several versions :

- **Microcell One** : barrier composed by plug-in **cylindrical heads** with a 5 m cable and a control housing with **one relay**
- **Microcell Two** : barrier composed by plug-in **cylindrical heads** with a 5 m cable and a control housing with **two relays**
- **Microcell Three** : barrier composed by plug-in **cylindrical heads** with a 5 m cable and a **surveillable** control housing with transistor output

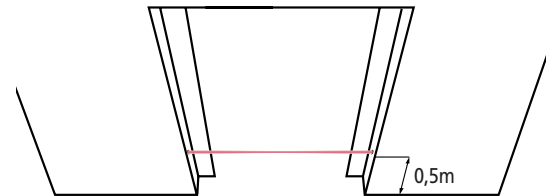
Notes :

- the Microcell range is available either in single (-S) or in double beam version (-D)
- an optional 10 m cable (-L) is also available

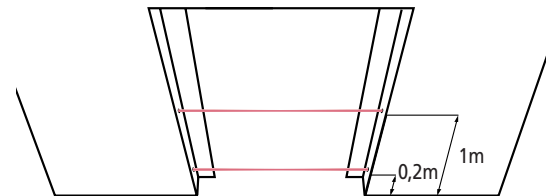


## Dimensions

## Sensing fields



Single beam



Double beam



## Accessories

**MMA** : surface mounting set

## Technical specifications

Technology	active infrared, microprocessor
Mounting height	min. 0,2 m above the floor
Distance between beams	min. 0,3 m (crossed beams)
Distance in relation to the door plane	2 cm
Minimum range	1 m
Maximum range	5 m - for min. mounting height of 0,2 m 10 m - for max. mounting height of 0,4 m
Half-opening angle of the beam	8°
Detection mode	presence (beam interruption)
Response time	
• transistor output (Microcell Three)	≤ 10 ms (setting or interruption of the beam)
• relay output (Microcell One and Two)	≤ 40 ms
Hold time	
• relay output (Microcell One and Two)	300 ms
Supply voltage (Microcell One and Two)	12-24 V AC ±10% - 12-24 V DC -5/+30%
(Microcell Three)	12-24 V DC -5/+20%
Current consumption	< 100 mA
Output (Microcell One and Two)	1 or 2 relays (free potential contact)
• relay contact ratings (max. voltage)	50 V DC / 50 V AC
• relay contact ratings (max. current)	1 A (resistive)
• maximum switching power	30 W (DC) / 50 VA (AC)
Output (Microcell Three)	open collector transistor (NPN or PNP)
• relay contact ratings (max. voltage)	30 V DC
• relay contact ratings (max. current)	20 mA
• voltage drop	< 2 V at 20 mA
Signal	1 LED per barrier
Adjustment (by dip-switch - Microcell One and Two)	single / double barrier standard / inverted outputs reduced / nominal range test position
Adjustment (by dip-switch - Microcell Three)	NPN / PNP outputs normal / inverted outputs reduced range B / nominal range B reduced range A / nominal range A
Temperature range	-20°C to +55°C
Immunity	
• sunlight	75000 lux
• incandescent lamp	25000 lux at 8°
• electromagnetic compatibility	according to 89/336/EEC
Waterproof heads	IP 65 (DIN 40050)
Dimensions	
• heads	housing : 10 mm (built-in) x 12,4 mm (diameter) collar : diameter 15,6 mm
• control housing	78 mm (L) x 50 mm (W) x 28 mm (H)
Cable length	5 m (10 m optional)
Weight	
• emitter	0,140 Kg (5 m) / 0,270 kg (10 m)
• receiver	0,140 Kg (5 m) / 0,270 kg (10 m)
• control housing	0,060 Kg
Material	ABS
Housing color	transparent
Cables colours	
• receiver	black
• emitter	grey

## Application



Subject to change without notice



**BEA**  
We open up New Horizons

