



*To open the door, just waving a hand near the door to prevent touch and spread of viruses.*

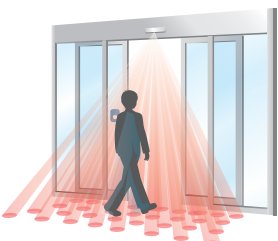
Put your hand near the door.



Sensor detects movement.



The start signal is output and the detection range is extended.



### 3H-IR14TS



Silver

Black

### Sticker (1 sheet included)



Hygienic and wide application



Reduce the risk of viral and bacterial infections

- **Anti-Viruses**

Reach your hand near the sticker and wave it to open the door without touching it.

- **Saving energy**

Limite detection to only those who enter and exit the door not to open and close repeatedly. Not detect the pedestrians walking parallel with door.

- **Safety**

After detecting a person, the safety detection area is triggered to prevent accidents between passersby and the door.

- **Small size**

Small and easy to set up and install on the door.

# 3H-IR14TS

Activation + Safety



## Installation Image

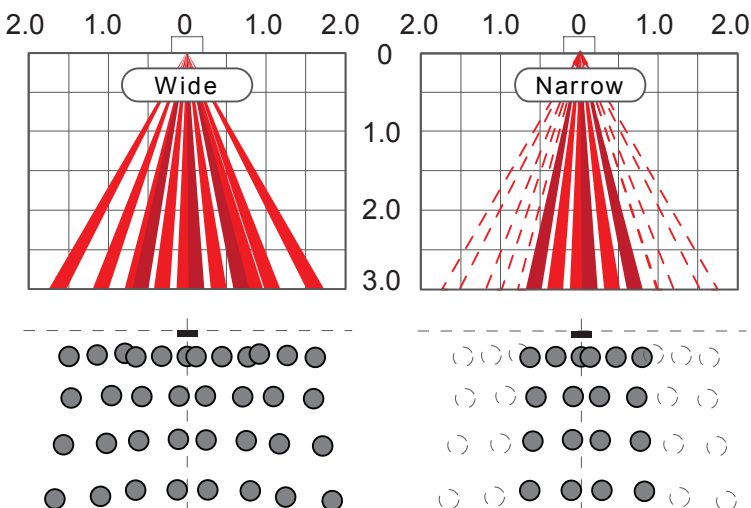


## Technical Specification

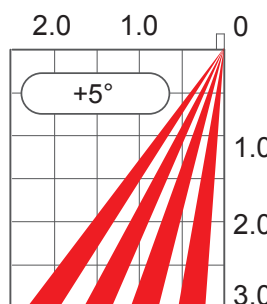
Model	3H-IR14TS
Detection Method	Active Infrared Reflection
Installation Height	3.0m (9.84ft) Max
Sensor Dimensions	210mm (W), 59mm (H), 28.5mm (D)
Depth Adjustment	Angle : 0° / +5° Row : R1 ~ R4
Width Adjustment	Wide / Narrow
Response Time	0.1s ~ 0.2s
Presence Timer	Row 1 : 2s / 10s / 60s / 180s Row 2~4 : 2s
Frequency	2 Frequencies
Monitor Mode	Normal / Snow
LED Indication	Standby (Row 1 monitoring) : Green Row 2~4 monitoring : Light blue Row 1 Detecting : Red Row 2, 3, 4 Detecting : Blue <i>*When multiple rows are detecting simultaneously, the innermost row is given priority.</i> Door Hunting : Orange Waiting for reset : Orange Blinking (Fast) Reflection Diagnostics : Green & Red Blinking (Fast) Reflected infrared signal from the floor is vely low : Green & Red Blinking (Flashing)
Power Supply	AC/DC : 12 ~ 24V±10%
Power Consumption	AC12V : 1.1VA Max, AC24V : 1.3VA Max DC12V : 70mA Max, DC24V : 40mA Max
Output	Relay Contact 1A DC50V 0.1A (Resistor Load)
Output Holding Time	Approx. 0.5s
Operating Temperature	-20°C ~ +60°C, (-4°F ~ +140°F)
Operating Humidity	80%
IP Rating	IP54
Weight	Approx. 180g (0.40 lbs)
Color	S : Silver , BL : Black
Accessories Provided	Sticker, Cable, Mounting Template, Installation Instructions

## Detection Area (m)

Front View



Side View(Max.)



Side View(Min.)

