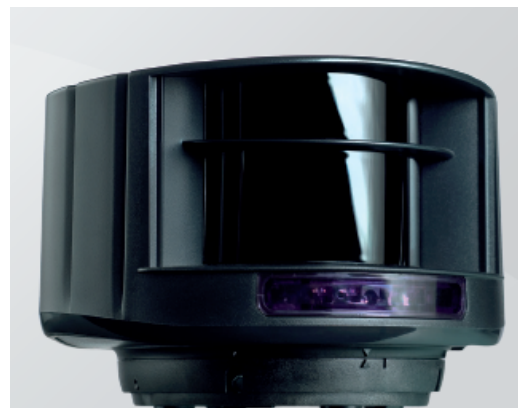


# LZR<sup>®</sup> - i100

SAFETY SENSOR  
FOR INDUSTRIAL DOORS

Commercial sheet

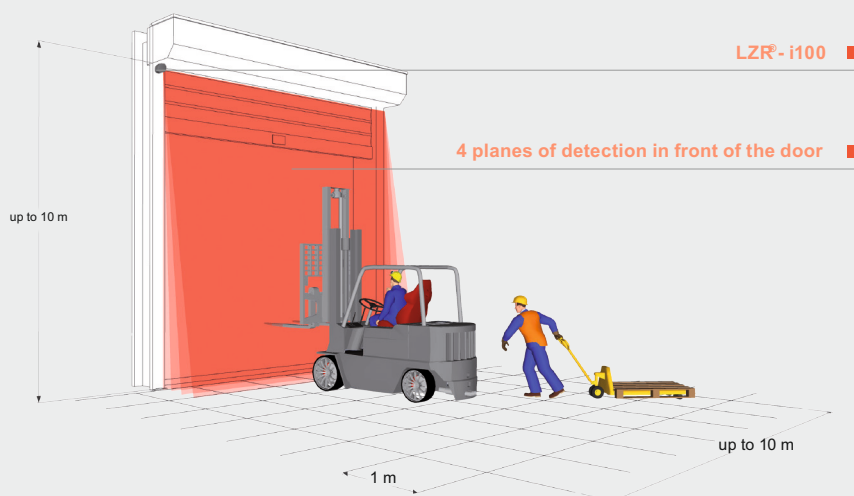


## THE PREMIUM SAFETY SOLUTION

### DESCRIPTION

LZR<sup>®</sup>-i100

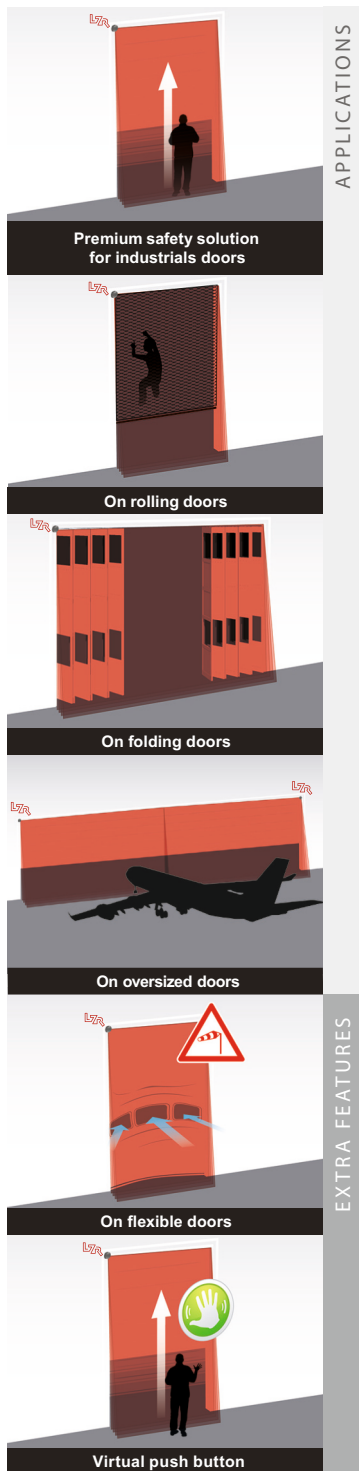
Up to 10 m × 10 m



### PERFORMANCE

- Maximal detection range : 9.9 m × 9.9 m.
- Variable depth of plane (1 m max.) according to the installation height.
- High performance safety solution for industrial doors certified PL "d"/ CAT 2 according to EN ISO 13849-1 and Type E according to EN 12453.
- High level of safety with a complete three-dimensional detection in front of the door.
- Detection of small objects.\*
- Replaces the current solutions such as contact edges, light beams and lightgrids.
- Easy installation and opportunity for the retrofit.

\* up to a few centimeters depending on the application.



APPLICATIONS

EXTRA FEATURES

## APPLICATIONS

- Safety at the opening and the closing of the door thanks to 2 separate detection areas.
- Possibility to create 2 virtual push buttons to open the door.

## DESIGNED FOR INDUSTRIAL ENVIRONMENTS

- Filters door vibrations and environmental interferences.
- Filters door leaf deformation by wind force.
- Degree of protection: IP65.

## EASE OF INSTALLATION

- Easy setting of the detection zone with 3 visible LASER beams.
- Automatic door dimensions teach-in.
- Setting with the universal remote control.
- Cable of 10 m provided.

## TECHNICAL SPECIFICATIONS

<b>Technology</b>	LASER scanner, time-of-flight measurement
<b>Detection mode</b>	Presence EN 12453 Type B
<b>Max. detection range</b>	9.9 m x 9.9 m
<b>Remission factor</b>	> 2 %
<b>Angular resolution</b>	0,3516°
<b>Typ. min. object size</b>	2,1 cm @ 3 m / 3,5 cm @ 5 m / 7 cm @ 10 m (proportion to object distance)
<b>Testbody</b>	700 mm x 300 mm x 200 mm (testbody A according to EN 12445)
<b>Emission characteristics</b>	
IR LASER	Wavelength 905 nm; max. output pulse power 75 W; Class 1
Red visible LASER	Wavelength 650 nm; max. output CW power 3 mW; Class 3R
<b>Supply voltage</b>	10-35V DC @ sensor terminal
<b>Power consumption</b>	< 5 W
<b>Response time</b>	Typ. 20 ms; max. 80 ms
<b>Output</b>	2 electronic relays (galvanic isolation - polarity free)
Max. switching voltage	35V DC / 24V AC
Max. switching current	80 mA (resistive)
<b>LED-signals</b>	1 blue LED: power-on status 1 orange LED: error status 2 bi-coloured LED: detection/output status
<b>Dimensions</b>	125 mm (L) x 93 mm (D) x 70 mm (H) (mounting bracket + 14 mm)
<b>Material</b>	PC/ASA
<b>Colour</b>	Black
<b>Rotation angles on bracket</b>	-5° to +5° (lockable)
<b>Tilt angles on bracket</b>	-3° to +3°
<b>Protection degree</b>	IP65
<b>Temperature range</b>	-30 °C to +60 °C if powered
<b>Humidity</b>	0-95 % non-condensing
<b>Vibrations</b>	< 2 G
<b>Norm conformity</b>	2006/95/EC: LVD 2002/95/EC: RoHS 2004/108/EC: EMC 2006/42/EC: MD; EN 12453: 2000 chapter 5.1.1.6, chapter 5.5.1 Safety device EN 12978: 2009 ; EN ISO 13849-1:2008 PL "d" / CAT2 ; EN 60529: 2001 ; IEC 60825-1:2007 ; EN 60950-1:2005 ; EN 61000-6-2:2005 ; EN 61000-6-3:2006 ; IEC 61496-1:2009 ; EN 61496-3: 2008 ESPE Type EN 62061: 2005 SIL 2 DIN 18650-1: 2010 Chapter 5.7.4

Specifications are subject to change without prior notice.

**DISCLAIMER** This document as well as all other enclosed documents (quotation / specification / other) are provided „as is“ without warranties of any kind, either expressed or implied, including but not limited to the implied warranties of merchantability, fitness for a particular purpose, or non-infringement. / Information is supplied upon the condition that the persons receiving it will make their own determination as to its suitability for their purposes prior to use. In no event will BEA be responsible for damages of any nature whatsoever resulting from the use of or reliance upon information from this document or the products to which the information refers. / BEA has the right without liability to change descriptions and specifications at any time / Prices, shipping and availability are subject to change without prior notice.



## LZR-i100 SAFETY SENSOR FOR INDUSTRIAL DOORS